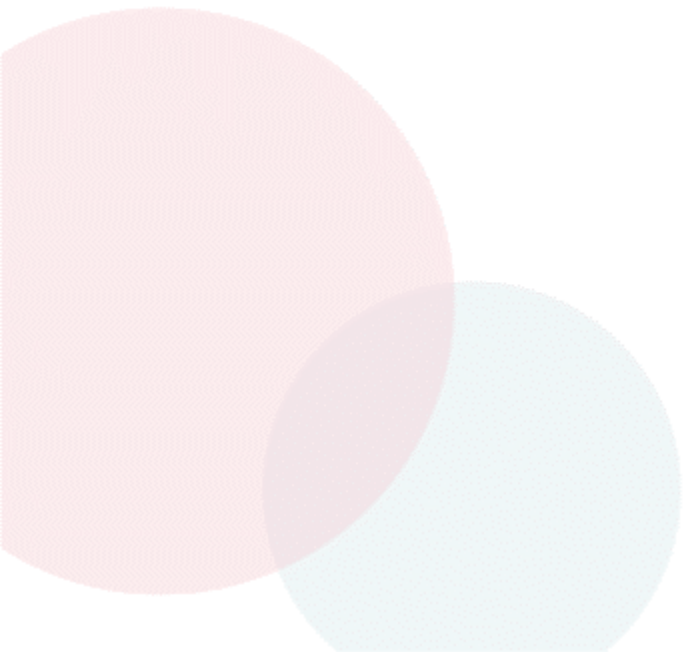


Brain Injury Screening


December 8, 2023

Massachusetts Rehabilitation Commission



Disclosure

This project was supported, in part by the **“Beyond Bridges”** grant number 90TBSG0071-03-00 (Massachusetts Rehabilitation Commission), from the U.S. Administration for Community Living, Department of Health and Human Services, Washington, D.C. 20201. Grantees undertaking projects with government sponsorship are encouraged to express freely their findings and conclusions. Points of view or opinions do not, therefore, necessarily represent official ACL policy.





About Brain Injury

Acquired Brain Injury (ABI)

Non-Traumatic

1. **Infectious** – meningitis, encephalitis, HIV,
2. **Neoplastic** – tumors, metastatic cancer
3. **Vascular** – stroke, brain aneurysm
4. **Neurotoxic** – lead poisoning, SUD
5. **Metabolic Disorders** – anoxia

Traumatic (TBI)

1. **Falls**
2. **Motor Vehicle Accidents**
3. **Sports/Recreational Activities**
4. **Industrial/Work Related Injuries**
5. **Military Combat**
6. **Violent Criminal Behavior**
7. **Homicide and Suicide Attempts**
8. **Domestic Violence/ Intimate Person Violence**
9. **Child Abuse** – including Shaken baby Syndrome

Risk Factors of Brain Injury



Behavioral Health
(Substance Use and
Mental Health)



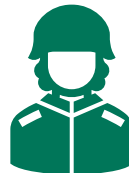
Older Adults



Criminal Justice
involved people



Domestic
Violence/Intimate
Partner Violence



Veterans, Law
Enforcement and
First Responders



Unhoused
People



Screening

Benefits of Screening

- Alert you to possible cognitive impairments
- Pro-active vs. Reactive response
- Increase the odds of successful interactions



Introducing a Screening



- Keep it conversational
- Address any known risk factors or recent events
- Include it with other screening conversations



OBISSS Tool

- Validated screening tool for ages 10+
- HIPPA compliant
- Follow-up includes MA resources for brain injury.
- Symptom Questionnaire for Brain Injury (SQBI)

Accessing OBISSS

- Requires an email address of the provider and optional for individual.
- **TRY IT!**
 - Use TEST as a first and last name so it is automatically removed from the data points.
 - State: MA
 - Password: 857

OBISSS Video

Welcome to



Let's get started!



Supporting Resources

OBISSS Resources

- Symptom Questionnaire for Brain Injury (SQBI)
- Tip Sheets
- MRC Connect and Brain Injury Programs
- Brain Injury Association of Massachusetts (BIA-MA)

Massachusetts Rehabilitation Commission
POSSIBILITY IS OUR PURPOSE

OUR SERVICES

- Community-based residential, day, and support services for persons with brain injuries
- Vocational Rehabilitation
 - Job Placement Assistance
 - College or vocational training
 - Pre-Employment Transition Services
 - Communication access services
 - Employer Consultation
- Independent Living Centers
- Supported living
- Home Care Assistance Program
- Accessible Housing Registry
- Assistive technology training, devices, and resources

MRC CONNECT

Your virtual gateway to the programs and resources you need to live life on your own terms.

Complete a single online application connects you to a broad range of services for Vocational Rehabilitation and Community Living.

Visit www.mass.gov/mrc-connect to get started.

MRC Accommodations Booklet

- **Designed** to assist providers working with individuals that may be experiencing cognitive deficits resulting from brain injury
- **Organized** by cognitive deficit, followed by how the deficit may appear when interacting with an individual, and compensatory strategies/accommodations
- Booklet Link: [Accommodations and Compensatory Strategies](#)

Massachusetts Rehabilitation Commission

ACCOMMODATIONS AND COMPENSATORY STRATEGIES

For Cognitive Deficits Resulting from a Brain Injury

Massachusetts Rehabilitation Commission

Beneficial Referrals to Consider

Medical and Behavioral Referrals

- Primary Care Physician
- Neurology
- Neuropsychologists
- Behavioral Health Services
- Psychiatrist
- Psychologist/Social Workers
- Rehabilitative Therapies (PT, OT, ST, REC)
- Physiatrist

Community Based Supports

- Case Management
- Brain Injury Support Groups
- Vocation / School
- Socialization / Recreational Programs
- Senior Centers
- Transportation
- Community Living Supports

MRC Brain Injury Services

- **Statewide Head Injury Program (SHIP)**

- Case Management
- Skills Training
- Residential Services
- Shared Living
- Adult Companion
- Social/Recreation Programs
- Respite Services
- Family Assistance Program
- Substance Use Services
- Technical Assistance regarding TBI

- **Brain Injury Community Centers**

- Worcester, Westfield, Chelmsford, Somerville and New Bedford

- **ABI/MFP Waiver**

- Waivers are designed to transition and support individuals with ABI from skilled nursing facilities and other long-stay hospital settings, into community placements.

Brain Injury Association of MA

Creating a better future for those affected by brain injury.

A nonprofit 501 c3 organization incorporated in 1982 and is an affiliate of the Brain Injury Association of America.

Purpose:

- To Promote the general welfare, rights and dignity of persons with brain injury
- To Promote and foster the empowerment of persons with brain injury
- To Provide information and resources for persons with brain injury, their families, friends, and professionals

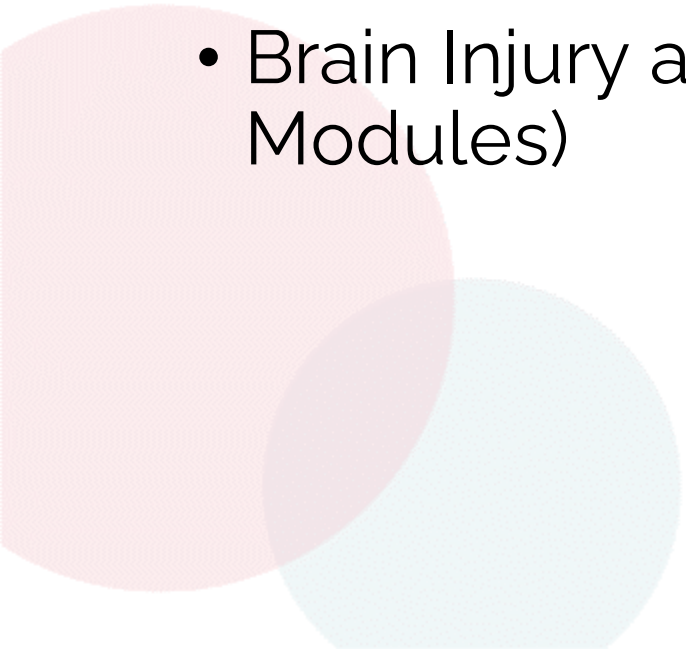
What We offer

- Support Groups
- Neuro-Resource Facilitation
- Recreation Events
- Information & Resources
- Coping & Counseling
- Family & Survivor Education
- Clinical Continuing Education
- Professional Education
- Community Programming
- Public Policy



Learning Opportunities

MRC Opportunities

- MRC Communities of Practice
 - Brain Injury Web course
 - Domestic Violence and Brain Injury
 - Brain Injury and Substance Use Disorder Recordings (5 Modules)
- 
- A decorative graphic in the bottom left corner consisting of two overlapping circles. The larger circle on the left is light pink, and the smaller circle on the right is light blue. They overlap in the center, creating a darker shade of purple.

MRC Communities of Practice

The intent of the *Beyond Bridges* Communities of Practice (CoP) is to enhance and expand professional knowledge of the co-occurring conditions of brain injury and behavioral health.

These communities will learn and share available resources and supports, expertise and build sustainable relationships with professional peers through culturally competent learning series, webinars, conferences, and presentations from department and field experts.



Q&A